



vhcentral

LTI-Advantage + Rostering

Schoology

Administrator Guide

Trademark and License Information

Copyright © and ® 2025 Vista Higher Learning

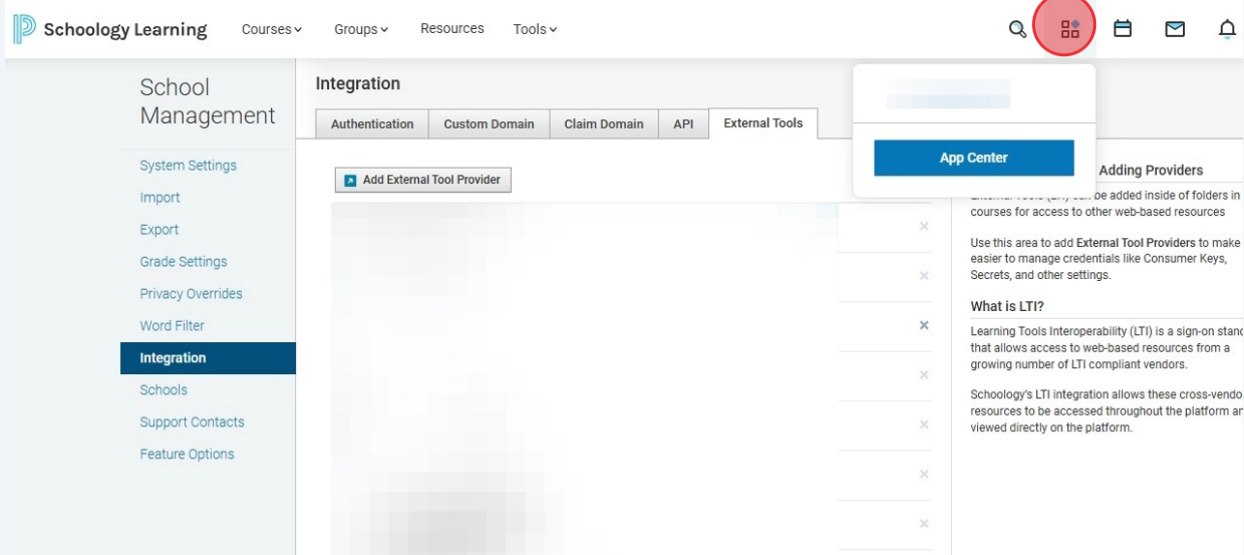
All rights reserved. No part of this publication may be reproduced without the prior written permission of the publisher.
Published in the United States of America.

Schoology Rostering Admin Guide



Schoology App Configuration

1 Click on the "Schoology Waffle".



2 Click "App Center".

The screenshot shows the Schoology Learning interface. The top navigation bar includes 'Schoology Learning', 'Courses', 'Groups', 'Resources', and 'Tools'. The left sidebar lists 'School Management' and 'Integration'. The 'Integration' section is active, showing tabs for 'Authentication', 'Custom Domain', 'Claim Domain', 'API', and 'External Tools'. A red circle highlights the 'App Center' link in the 'External Tools' section. A 'QA500 Quicksight' popup is visible over the 'App Center' link. The main content area shows an 'Add External Tool Provider' button and a list of providers with 'x' icons. A 'What is LTI?' section is also visible on the right.



Alert! If you do not see the menu, you may be missing the following permission: Schoology Apps and APIs > Schoology Apps > Access to app center.

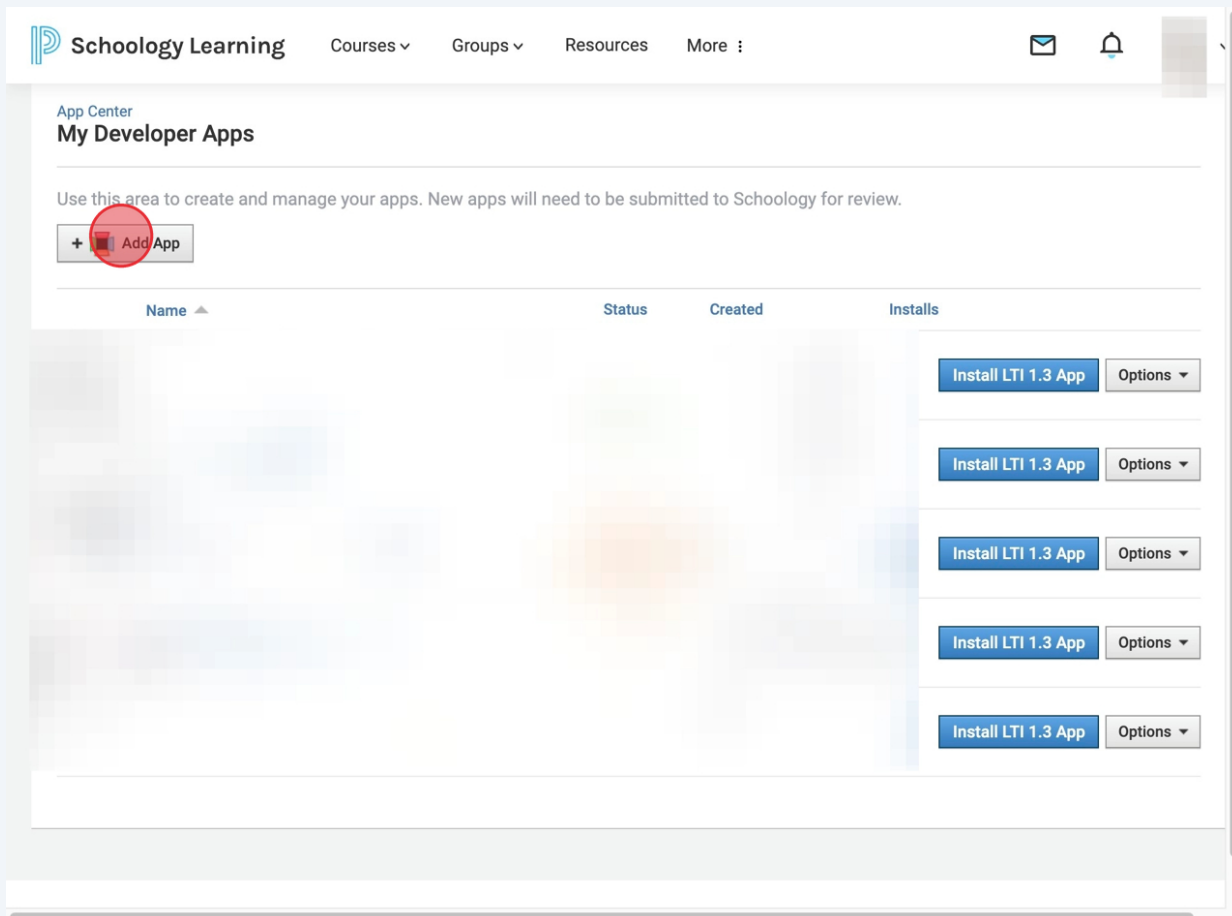
3 Click "My Developer Apps".

The screenshot shows the Schoology Learning interface. The top navigation bar includes 'Schoology Learning', 'Courses', 'Groups', 'Resources', and 'Tools'. The 'App Center' section is active, showing 'Organization Apps' and 'My Developer Apps'. A red circle highlights the 'My Developer Apps' link. Below the navigation, there are filters for 'Type', 'Categories', 'Levels', 'Recommended for', and 'Most Popular'. The main content area shows a 'No Track Assigned' section with a table of students and their tracks. A 'Submit' button is visible at the bottom right. A 'What is LTI?' section is also visible on the right.



Alert! If you do not see the link, you may be missing the following permission: Schoology Apps and APIs > Schoology Apps > Develop apps.

4 Click "Add App".



5 Copy and paste the following details as shown in the sections below:

- **General Details**

- **App Name:** Launch vhlcentral

- **Description:** vhlcentral is an online learning environment created specifically for language acquisition and literacy development. Students have access to plenty of learning tools and practice opportunities, engaging activities, and a digital environment that is both responsive and accessible. Powerful course management, customization, and grading tools make VHL Central the ideal choice for all language teachers.

6 "General details" completed sections for reference.

App Name: * vhlcentral

Description: *

B I U **S³ S₃**

vhlcentral is an online learning environment created specifically for language acquisition and literacy development. Students have access to plenty of learning tools and practice opportunities, engaging activities, and a digital environment that is both responsive and accessible. Powerful course management, customization, and grading tools make VHL Central the ideal choice for all language teachers.

Category: *

Arts

Health & Physical Education

7 Copy and paste the following details as shown in the sections below:

- **Category:** Language Arts
- **Level:** None
- **Recommended for:** Leave all items unselected.
- **Available for:** Only people in my school
 - **Make app available to System Administrators only:** Leave unchecked.
 - **This app uses cookies:** Leave unchecked.
- **Starting Price:** Leave unchecked.

8 "General details" completed sections for reference.

Category: *
Arts
Health & Physical Education
Language Arts ✓

Level:
None ▾

Recommended For:
 Instructors Students Admins

Available for ? : *
Only people in my school ▾
 Make app available to System Administrators only.
 This app uses cookies ?

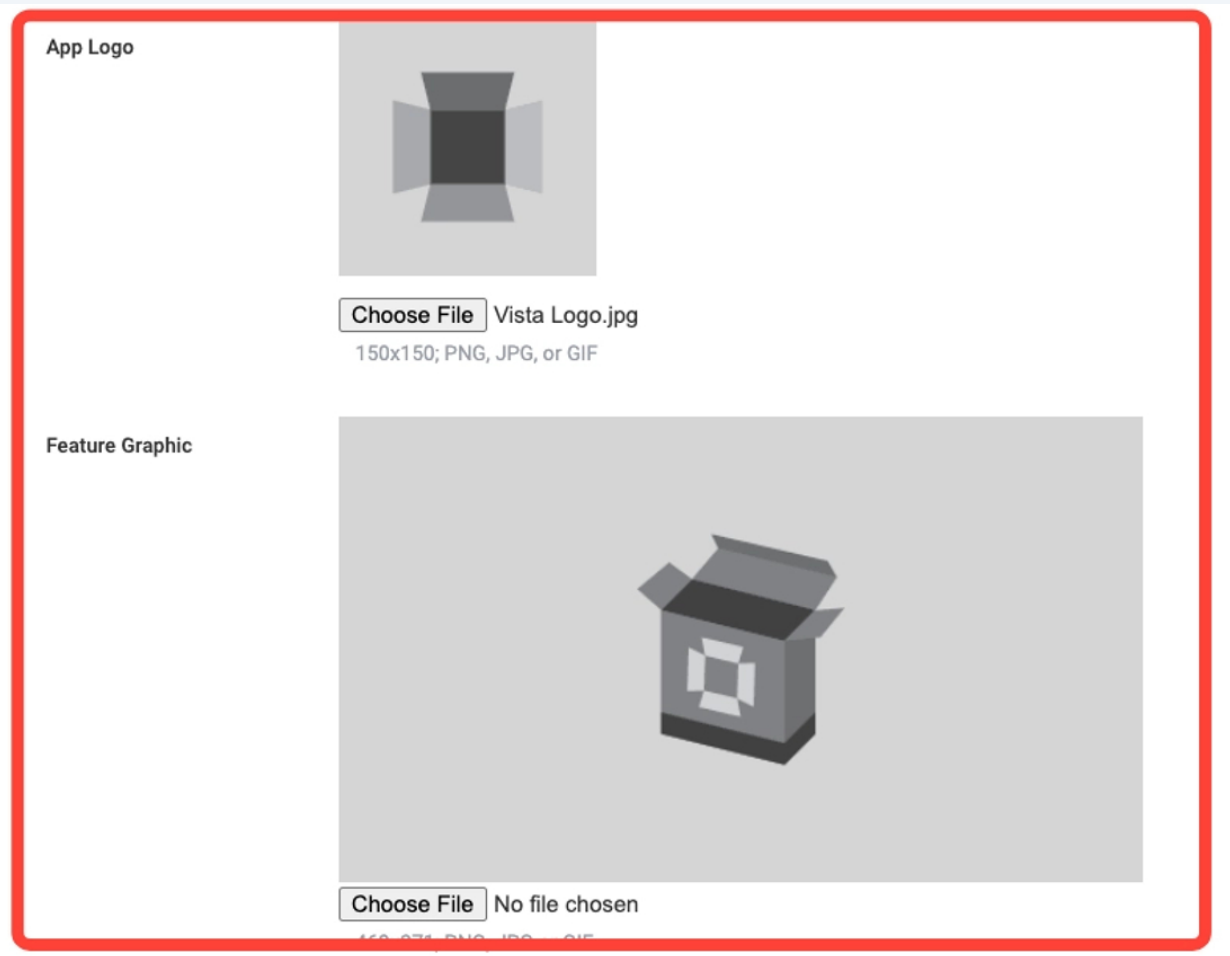
Starting Price ? :
\$ Leave blank if free

App Logo

9 Copy and paste the following details as shown in the sections below:

- **App Logo:**
- **Feature Graphic:** Leave unchanged.
- **App Screenshots:** Leave unchanged.

10 "General details" completed sections for reference.



11 • LTI 1.3 Details

- **Type of App:** LTI 1.3 App
- **Launch app in Schoology:** *Leave checked.*
- **Can be installed for:** Under **Courses**, check the following checkboxes:
 - **Left Navigation**
 - **Course Materials Selection**
- **Configuration Type:** Manual
- **Privacy:** Send Name and Email/Username of user who launches the tool

12 "General details" completed sections for reference.

Type of App: * LTI 1.3 App Launch app in Schoology ?

LTI Apps use the IMS LTI protocol for app launching and content return

Can be installed for ? : *

<input type="checkbox"/> Users	
<input type="checkbox"/> App Center Dropdown Menu	Overwrite Domain/URL
<input type="checkbox"/> User Profile Left Navigation Menu	Overwrite Domain/URL
<input type="checkbox"/> Courses	
<input checked="" type="checkbox"/> Left Navigation	Overwrite Domain/URL
<input checked="" type="checkbox"/> Course Materials Selection	Overwrite Domain/URL
<input type="checkbox"/> Rich Text Editor	Overwrite Domain/URL
<input type="checkbox"/> External Tool	Overwrite Domain/URL
<input type="checkbox"/> Groups	
<input type="checkbox"/> Resources	Overwrite Domain/URL

Configuration Type: Manual

Privacy: Send Name and Email/Username of user who launches the tool

LTI Advantage Extensions: Deep Linking ?

Deep Linking is required for apps that can be installed to Course Materials Selection or Rich Text Editor

13

• LTI Advantage Extensions:

- **Deep Linking:** *Leave checked.* (This is automatically selected when **Course Materials Selection** is selected.)

- **Assignment and Grade Services:** *Check the box.*

- **Names and Roles Services:** *Check the box.*

- **Tool Public Key:** *Leave blank.*

- **URL Options** Configure the URL endpoints for your target environment. Use Production URLs to connect your live Schoology and VHL Central sites for teachers and students to use during the academic year. Only use Non-Production URLs in coordination with the VHL Central technical team to test integration functionality.

- **Production URLs:**

- **JWKS URL:** <https://www.vhlcentral.com/lti/keys>

- **Domain/URL:** <https://www.vhlcentral.com>

- **Custom Parameters:** `sis_id=$com.schoology.User.uniqueId`

- This **must** be included if transitioning from Clever. This **must not** be included when transitioning from Roster Assistant.

- **OIDC Login Init URL:** https://www.vhlcentral.com/lti/login_initiations

- **Redirect URLs:** <https://www.vhlcentral.com/lti/launches>

- **Require System Administrators to configure settings for this App:** *Leave unchecked.*

14 "General details" completed sections for reference.

LTI Advantage Extensions:

- Deep Linking [?](#)
Deep Linking is required for apps that can be installed to Course Materials Selection or Rich Text Editor
- Assignment and Grade Services [?](#)
- Names and Roles Services

Tool Public Key [?](#) :

OR

JWKS URL [?](#) :

Domain/URL:

Custom Parameters:

Custom Parameters: One key value pair per line (e.g. key=value)

Include App Custom Parameters with External Tool Link launches.

OIDC Login Init URL [?](#) :

Redirect URLs [?](#) :

Require System Administrators to configure settings for this App [?](#)

15 Click "This application meets the Schoology Terms of Use field" and click "Submit".

Custom Parameters: One key value pair per line (e.g. key=value)

Include App Custom Parameters with External Tool Link launches.

OIDC Login Init URL [?](#) :

Redirect URLs [?](#) :

Require System Administrators to configure settings for this App [?](#)

This application meets the Schoology [Terms of Use](#)

Schoology App Installation

16

After clicking **"Submit"** to add the app, Schoology will display the app details page with a confirmation that the app was created successfully.

Schoology Learning Courses Groups Resources Tools

Your app has been created. Your oauth consumer key and secret are listed below. You can access them at any time from the gear dropdown of your application.
OAuth Consumer Key:
OAuth Consumer Secret:

VHL Central by Vista Higher Learning

Install LTI 1.3 App Options

Categories: Language Arts Level: No restrictions Recommended for: No recommendation LTI Extensions: Deep Linking

Description

VHL Central is an online learning environment created specifically for language acquisition and literacy development. Students have access to plenty of learning tools and practice opportunities, engaging activities, and a digital environment that is both responsive and accessible. Powerful course management, customization, and grading tools, make VHL Central the ideal choice for all language teachers.

17

Click **"Install LTI 1.3 App"**.

Schoology Learning Courses Groups Resources Tools

Your app has been created. Your oauth consumer key and secret are listed below. You can access them at any time from the gear dropdown of your application.
OAuth Consumer Key:
OAuth Consumer Secret:

VHL Central by Vista Higher Learning

Install LTI 1.3 App Options

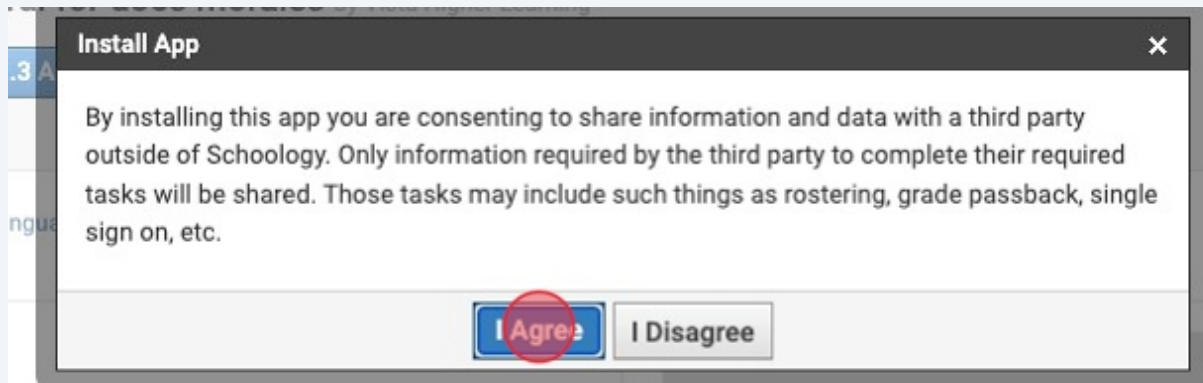
Categories: Language Arts Level: No restrictions Recommended for: No recommendation LTI Extensions: Deep Linking

Description

VHL Central is an online learning environment created specifically for language acquisition and literacy development. Students have access to plenty of learning tools and practice opportunities, engaging activities, and a digital environment that is both responsive and accessible. Powerful course management, customization, and grading tools, make VHL Central the ideal choice for all language teachers.

English Support | PowerSchool Community | User Toolbox | PRIVACY POLICY | Terms of Use PowerSchool © 2025

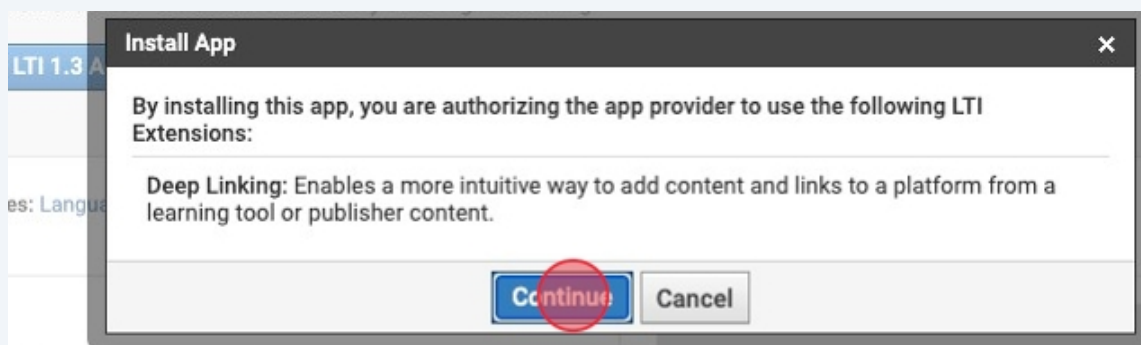
18 Click **"I Agree"**.



environment created specifically for development. Students have access to opportunities, engaging activities, and a responsive and accessible. Powerful course grading tools, make VHL Central the ideal



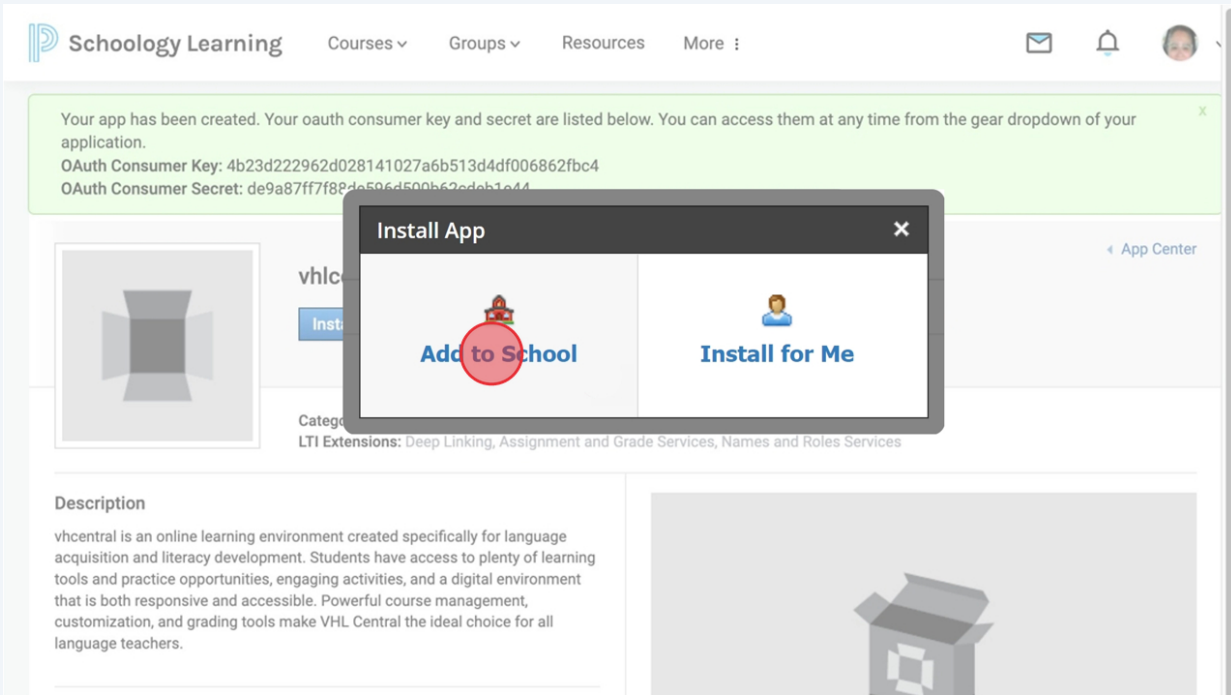
19 Click **"Continue"**.



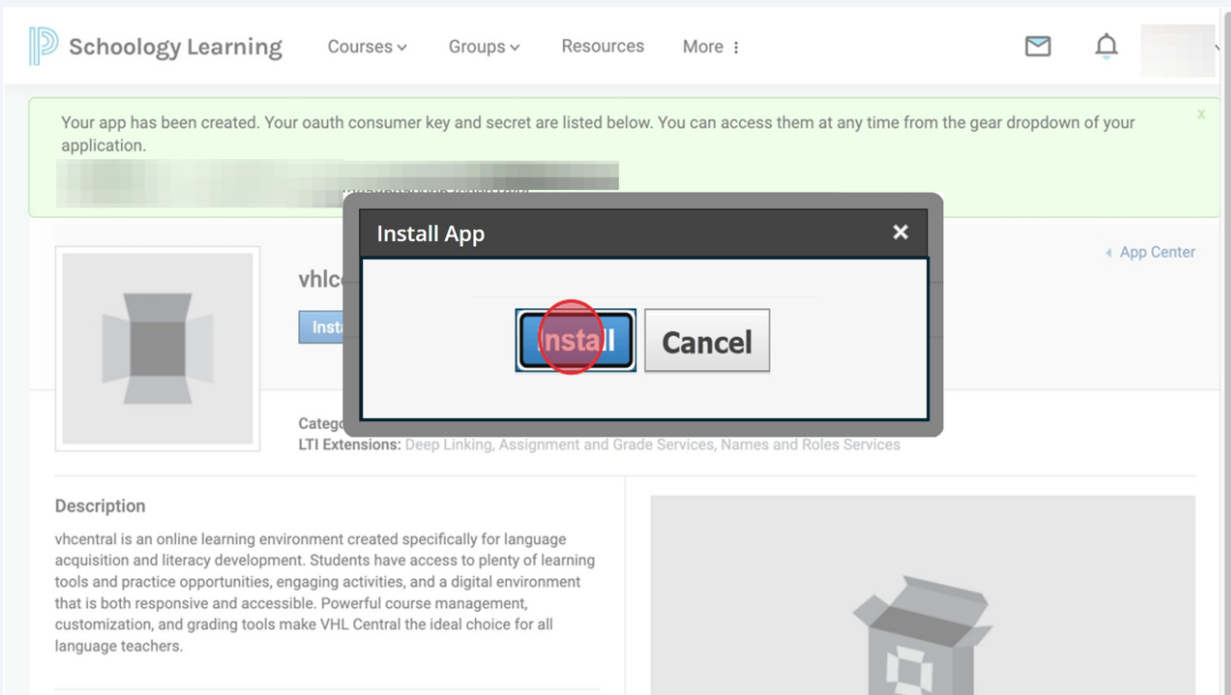
environment created specifically for development. Students have access to opportunities, engaging activities, and a responsive and accessible. Powerful course grading tools, make VHL Central the ideal



20 Click "Add to School".



21 Click "Install".

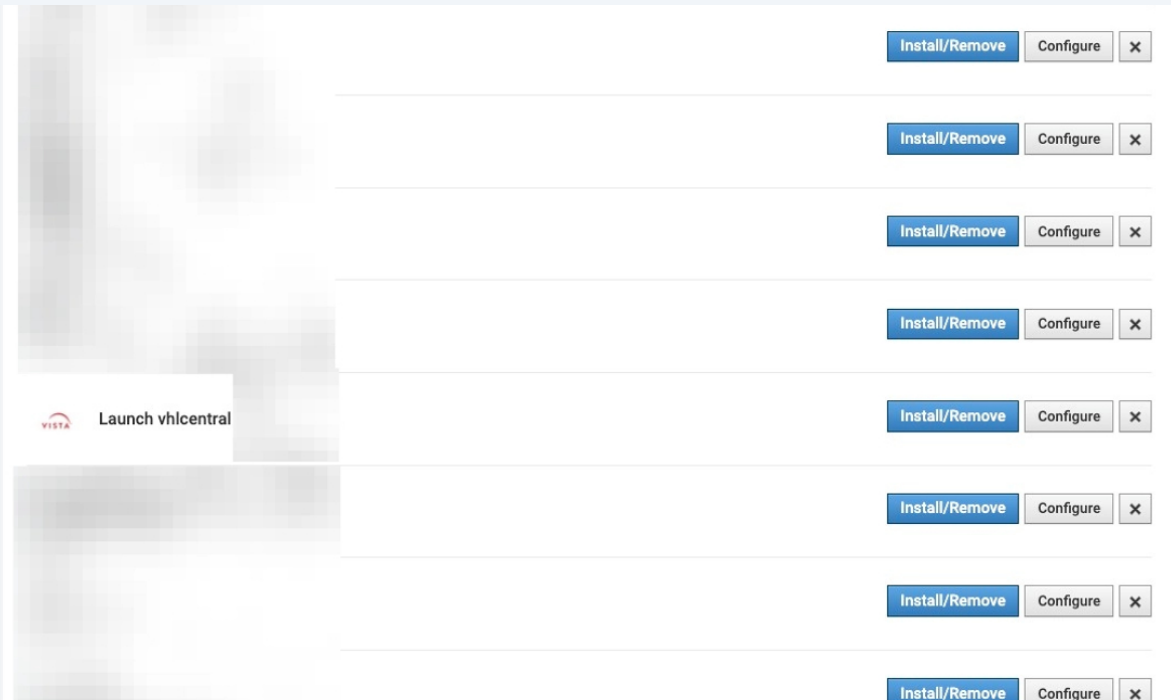




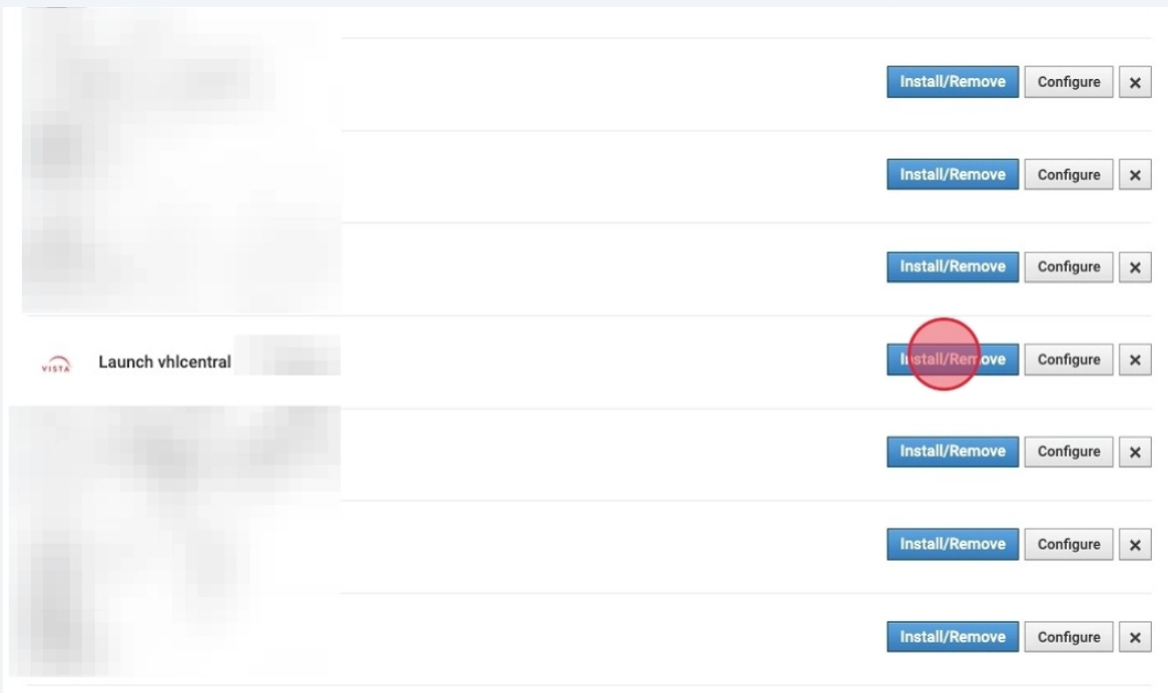
Alert! If you do not see any options, you may be missing the following permission: Administration Settings > System Administration > **Administer applications.**

22

Once installation has been completed, you will see the app in the **Organization Apps** page in the App Center.



23 Click **"Install/Remove"**.

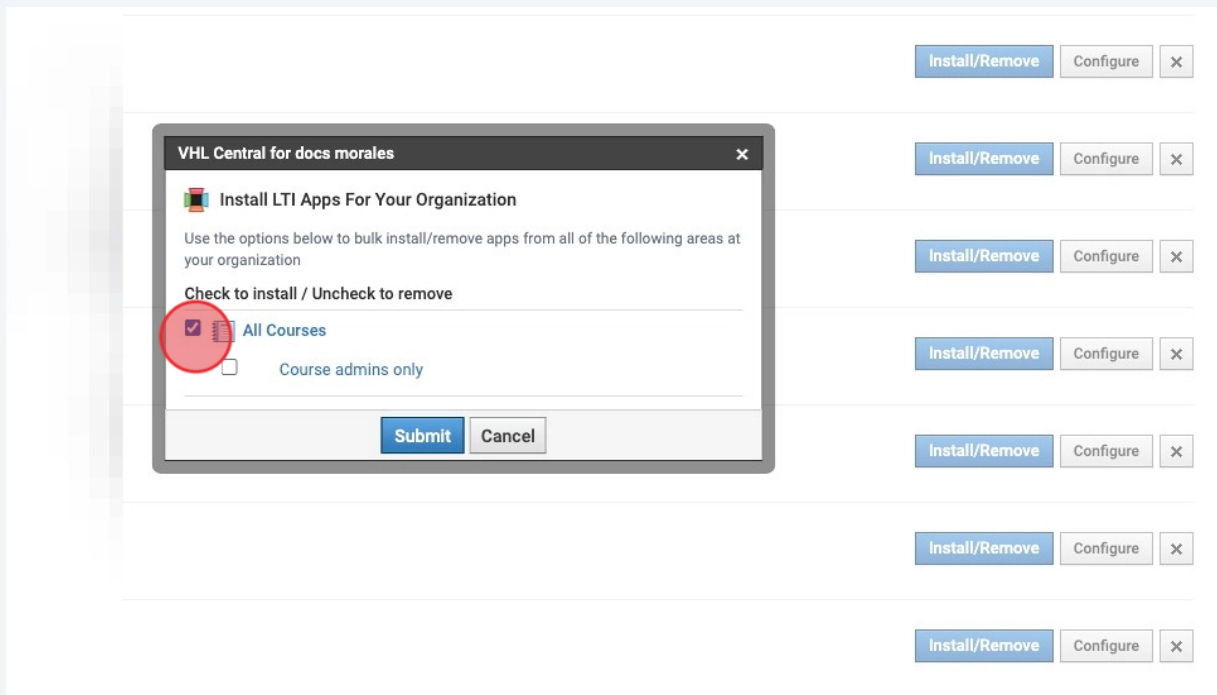


Alert! Workaround steps for Schoology deep linking bug!

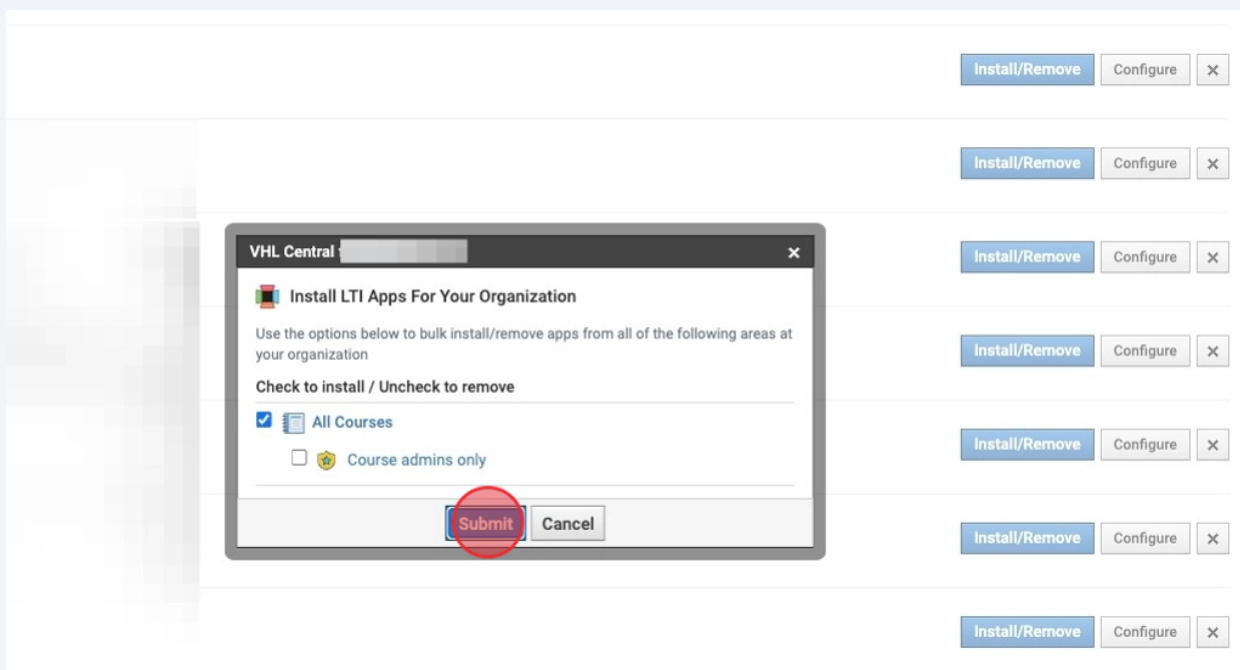
Completing these steps is **strongly** recommended; otherwise, deep links may not work after they are created by the instructor. We have observed two types of errors prior to applying the workaround fix:

- "Page Not Found" errors on VHLCentral - Schoology tries to access the deep link directly, rather than performing an LTI launch
- "We were unable to locate an external tool for the specified tool link" on Schoology

24 Click the "All Courses" field.



25 Click "Submit".

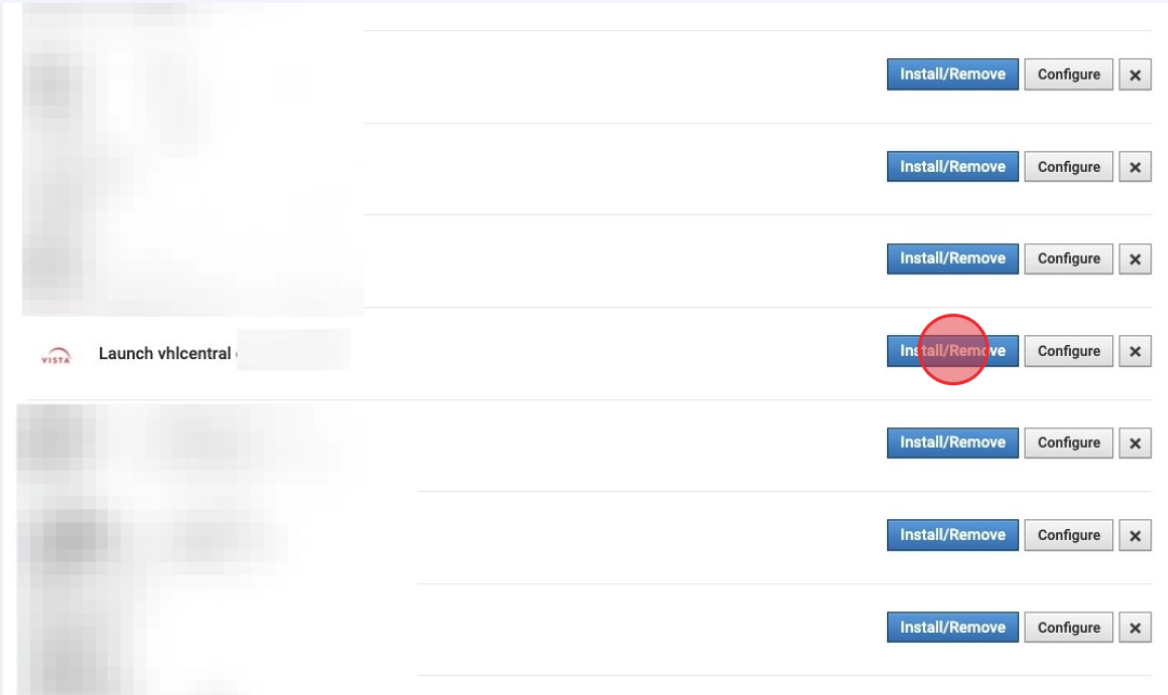




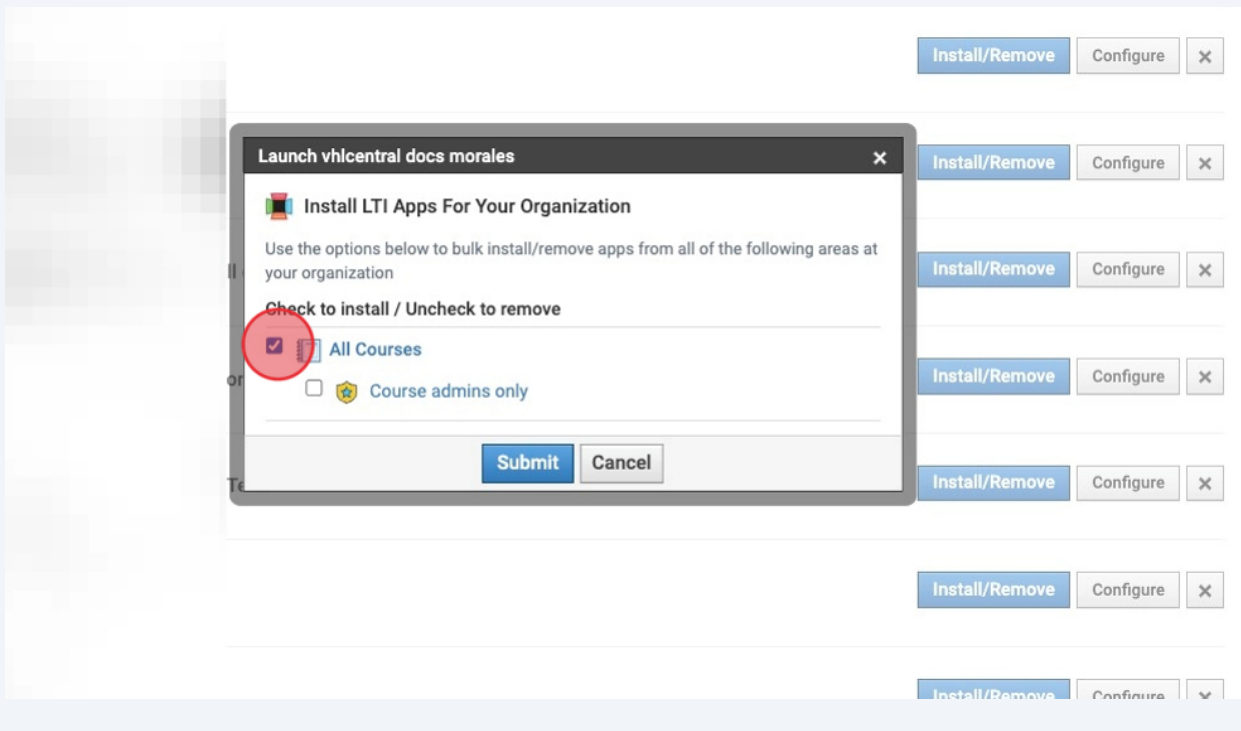
Alert! If you want to install the vhlcentral app for all courses (regardless of Subject Area), **stop here**.

26

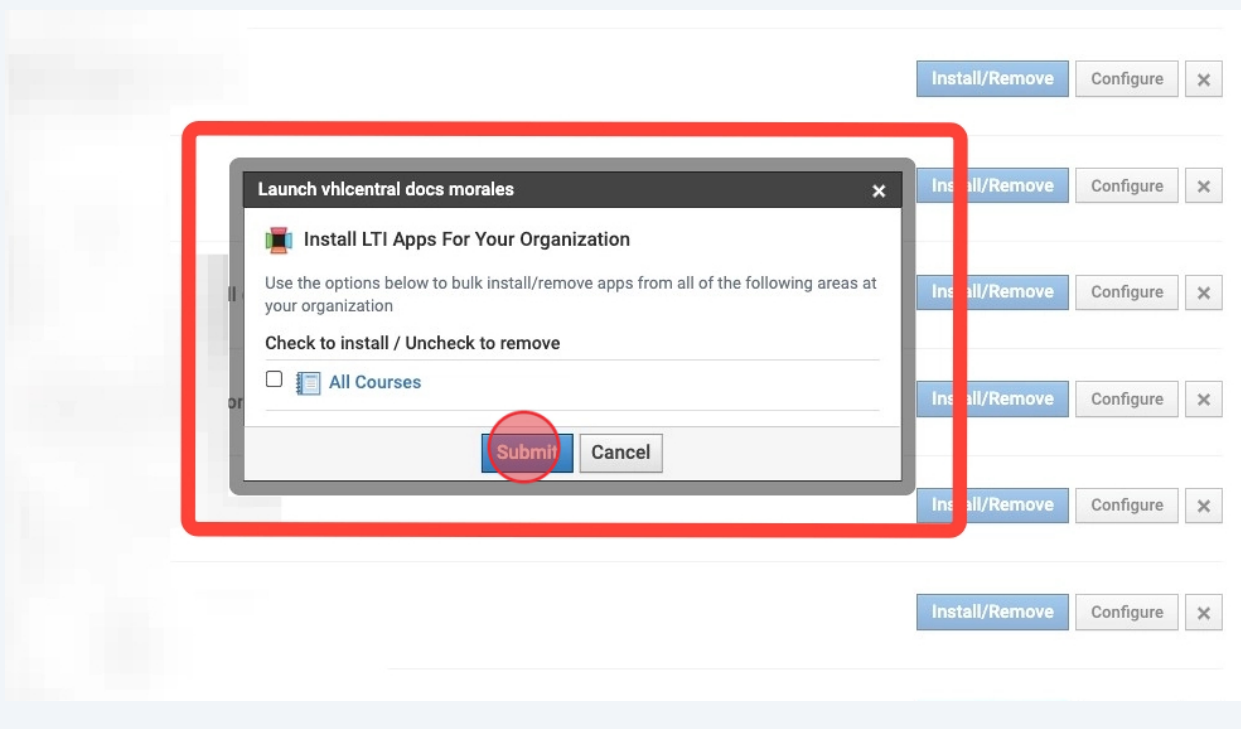
If you want to install the vhlcentral app for individual courses as needed, continue by clicking the **Install/Remove** button again.



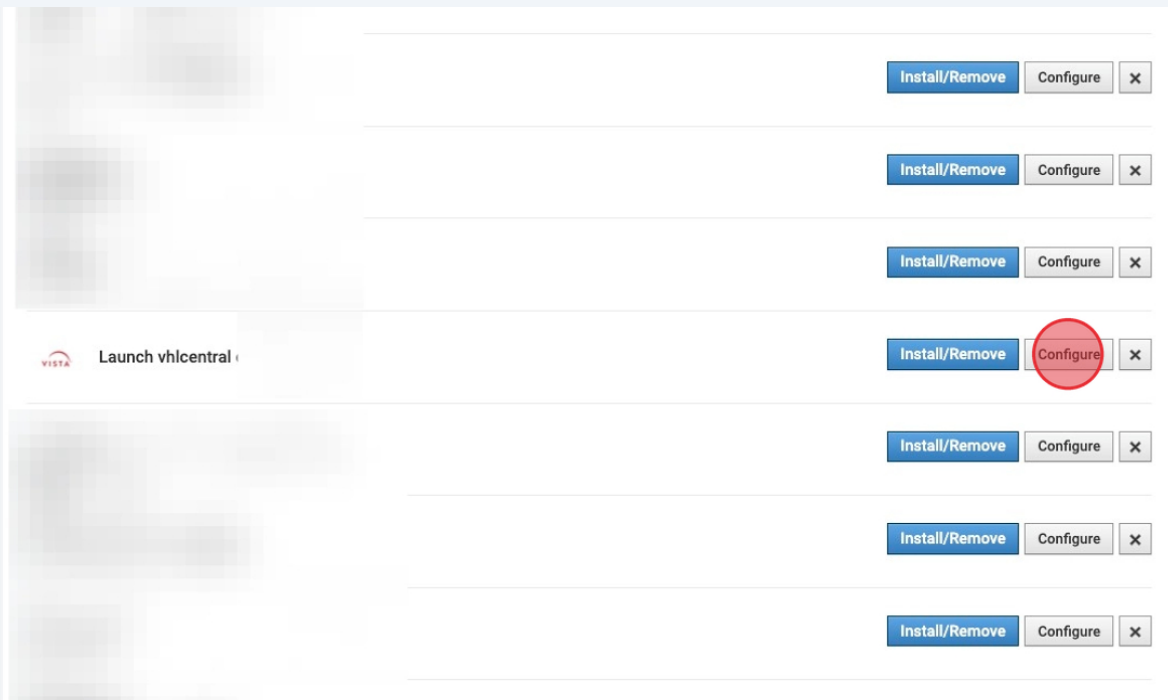
27 Uncheck the "All Courses" field.



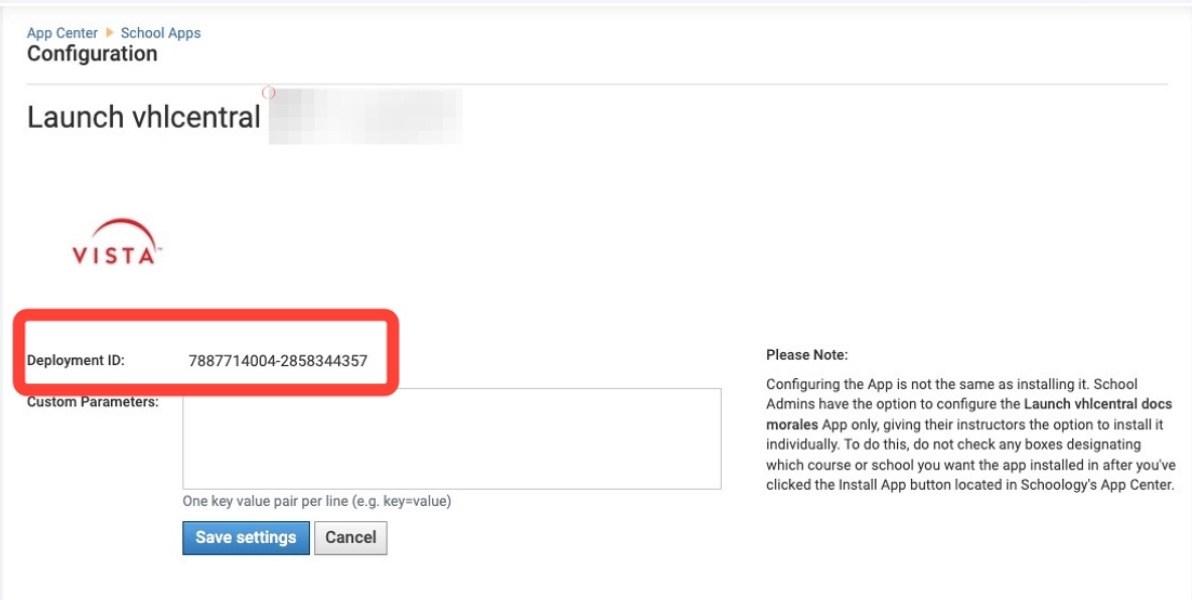
28 Leave it unchecked, and click "Submit".



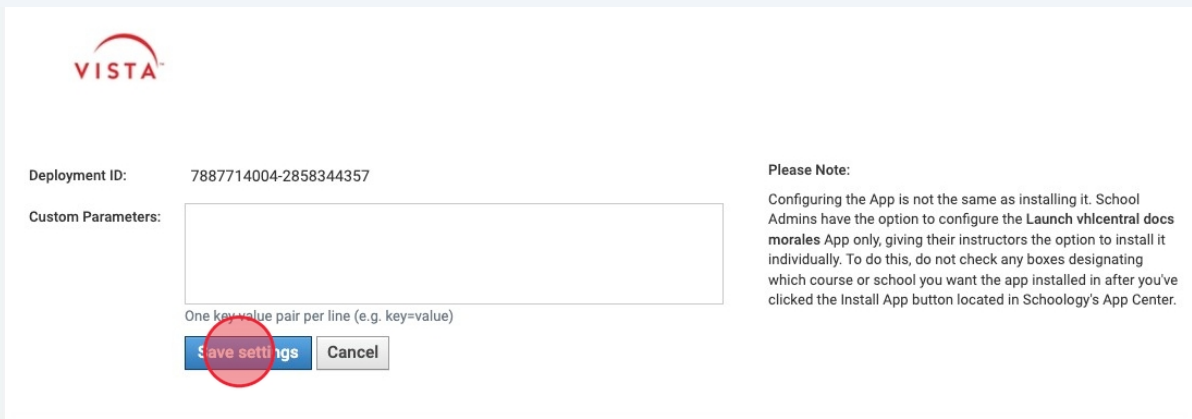
29 Click "Configure".



30 Copy the "Deployment ID".



31 Click "Save settings".



VISTA

Deployment ID: 7887714004-2858344357

Custom Parameters:

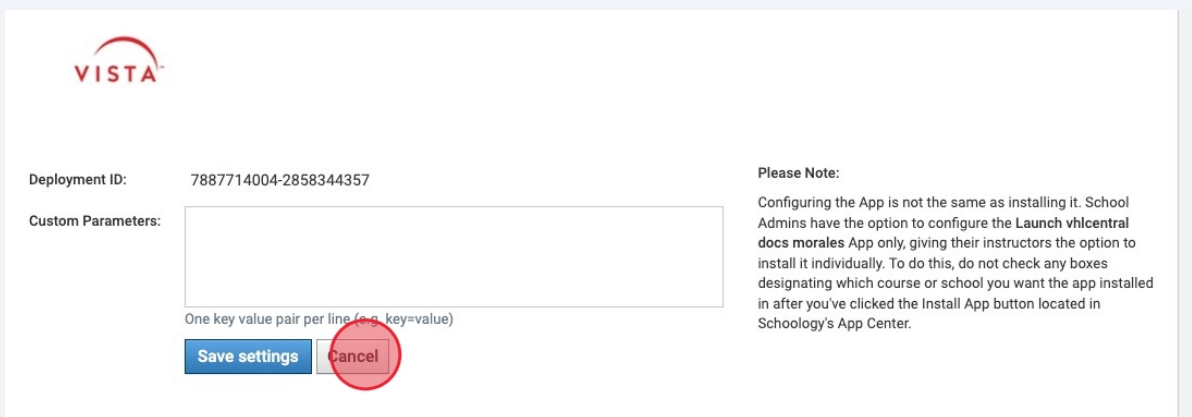
One key value pair per line (e.g. key=value)

Save settings **Cancel**

Please Note:
Configuring the App is not the same as installing it. School Admins have the option to configure the **Launch vhlcentral docs morales** App only, giving their instructors the option to install it individually. To do this, do not check any boxes designating which course or school you want the app installed in after you've clicked the Install App button located in Schoology's App Center.



32 Click "Cancel".



VISTA

Deployment ID: 7887714004-2858344357

Custom Parameters:

One key value pair per line (e.g. key=value)

Save settings **Cancel**

Please Note:
Configuring the App is not the same as installing it. School Admins have the option to configure the **Launch vhlcentral docs morales** App only, giving their instructors the option to install it individually. To do this, do not check any boxes designating which course or school you want the app installed in after you've clicked the Install App button located in Schoology's App Center.





Alert! The Deployment ID is composed of a Client ID that uniquely identifies the Schoology app and the Schoology school ID for the district or top-level school. These two values are required to configure the LTI Platform in VHL Central.

33

Submit the **Deployment ID** to Tech Support by replying to the ticket where the directions for installing the app were sent to you. Tech Support will then create the platform and advise when it has been verified.

34

To install the VHL Central app into the course, follow your district/school's procedure to add an app. That can be through the App Center, Install your Apps on the navigation on the left-hand side of your course or the directions specific to your institution.